

GH max. 10 m



SD / WD / ZD  
342m<sup>2</sup>  
20° - 45°

- Großenseebach  
Gf-Planung "Am Schwegelacker"
- Speedpipe (24\*7\*1,5 + 14\*2)
  - Hausanschlussrohr (2\*7\*1,5)
  - Hausanschluss

Stand: 25.09.2014



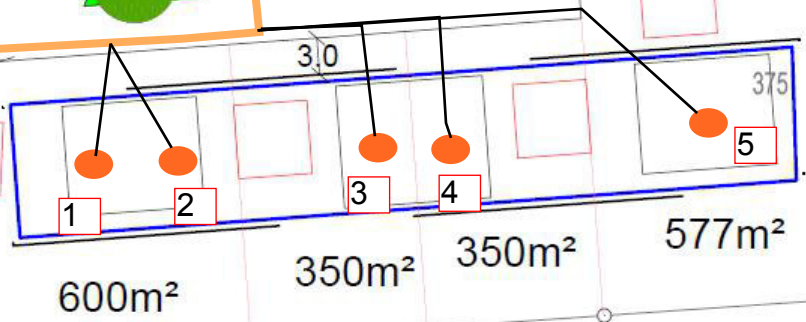
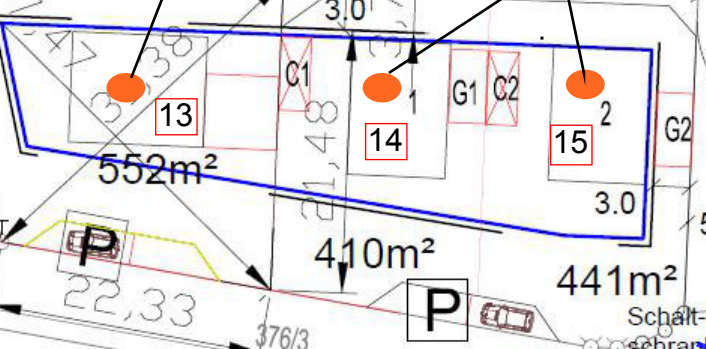
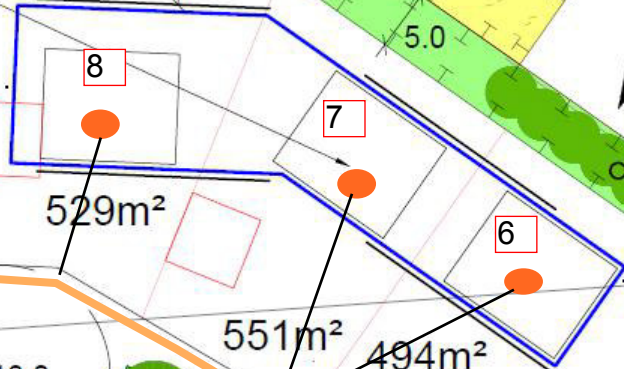
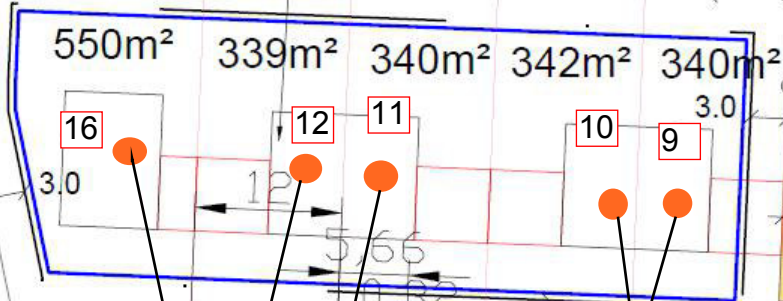
4.120m<sup>2</sup>

337m<sup>2</sup>

1.3 Siedlerstreifen, 2 als Wiese

Kläranlage

572m<sup>2</sup>



Speedpipe 24\*7\*1,5+14\*2)

5.0

5.0

376/4

281/4

Schalt-Schrank

486/17

22,94

22,33

376/3

5.5

Ø18.0

4.0

F

5.0

5.0

5.0

374

550m<sup>2</sup>

339m<sup>2</sup>

340m<sup>2</sup>

342m<sup>2</sup>

340m<sup>2</sup>

529m<sup>2</sup>

551m<sup>2</sup>

494m<sup>2</sup>

552m<sup>2</sup>

410m<sup>2</sup>

441m<sup>2</sup>

600m<sup>2</sup>

350m<sup>2</sup>

350m<sup>2</sup>

577m<sup>2</sup>

+

5.0

5.0

376/4

281/4

Schalt-Schrank

486/17

22,94

22,33

376/3

5.5

Ø18.0

4.0

F

5.0

5.0

5.0

374

550m<sup>2</sup>

339m<sup>2</sup>

340m<sup>2</sup>

342m<sup>2</sup>

340m<sup>2</sup>

529m<sup>2</sup>

551m<sup>2</sup>

494m<sup>2</sup>

552m<sup>2</sup>

410m<sup>2</sup>

441m<sup>2</sup>

600m<sup>2</sup>

350m<sup>2</sup>

350m<sup>2</sup>

577m<sup>2</sup>

+

5.0

5.0

376/4

281/4

Schalt-Schrank

# Großenseebach

(299 Schule)



Legende

- Leerrohr (2x 50 x4,6)

Glasfaser-Leerrohr-Verlegung  
BG Schwegelacker

Am Wiesen-  
grund

297

259 © BVV

© BVV